



macular hole

a closer look

HOW THE EYE SEES

The macula is the central area of one of the most important parts of your eye — the **retina**. The retina is a thin layer of light-sensitive tissue that lines the back of the eye. Light rays are focused onto the retina, where they are transmitted to the brain and interpreted as the images you see. The macula is the portion of the retina responsible for clear, detailed vision.

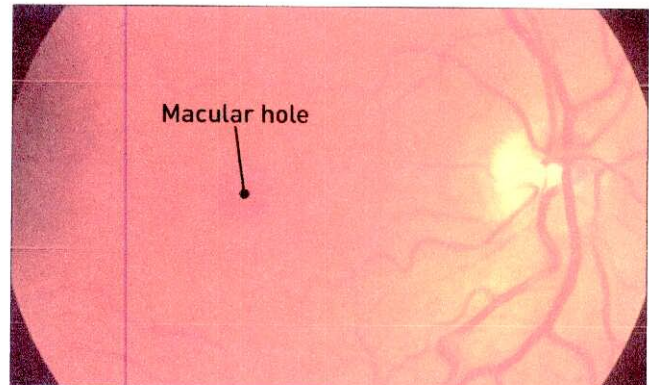
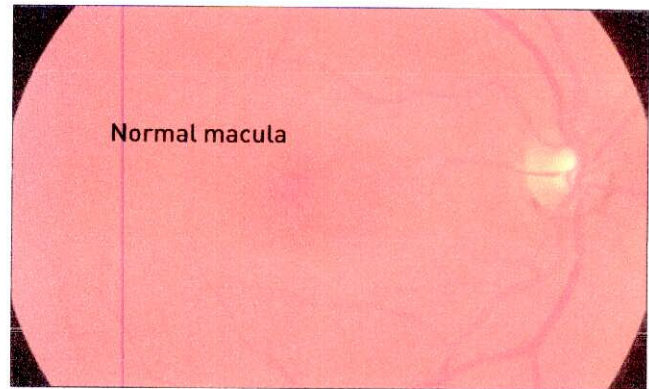
HOW DOES A MACULAR HOLE FORM?

Your eye is filled with a gel-like substance called **vitreous**, which lies in front of the macula. As you age, the vitreous gel shrinks and pulls away from the macula, usually with no negative effect on your sight. In some cases, however, the vitreous gel sticks to the macula and is unable to pull away. As a result, the macular tissue stretches. After several weeks or months the macula tears, forming a hole.

Less common causes of macular holes include injury and long-term swelling of the macula.

WHAT ARE THE SYMPTOMS OF A MACULAR HOLE?

In the early stages of hole formation, your central vision becomes blurred and distorted. If the hole progresses, a blind spot develops in your central vision and impairs the ability to see at both distant and close range.



It is important to note that if the macula is damaged, you will not lose your vision entirely. You will still have peripheral, or side, vision.

HOW IS A MACULAR HOLE DIAGNOSED?

Your ophthalmologist (Eye M.D.) will diagnose a macular hole by looking inside your eye with special instruments. Your ophthalmologist may use a test called optical coherence tomography, or OCT, to scan and examine your retina. OCT uses light waves to reveal specific layers of the retina.



HOW IS A MACULAR HOLE TREATED?

Vitreotomy surgery is the most effective treatment to repair a macular hole and possibly improve vision.

The surgery involves using tiny instruments to remove the vitreous gel that is pulling on the macula. The eye is then filled with a special gas bubble to help flatten the macular hole and hold it in place while it heals.

You must maintain a constant face-down position after surgery to keep the gas bubble in contact with the macula. This can range from a few days to a few weeks, depending on your surgeon's recommendation. A successful result often depends on how well this position is maintained. The bubble will then slowly dissolve on its own.

If you have a gas bubble, you cannot fly in an airplane until the gas bubble has dissolved, as a rapid increase in altitude can cause a dangerous rise in eye pressure. You must also not undergo general anesthesia using nitrous gas, though it is generally safe to have general anesthesia without using nitrous gas.

You can expect some discomfort after surgery. You will need to wear an eye patch for a short time. Your ophthalmologist will prescribe eyedrops for you and advise you when to resume normal activity.

As the macular hole closes, the eye slowly regains part of the lost sight. The outcome for vision may depend on the size of the hole and how long it was present before surgery. The amount of visual recovery can vary.

WHAT ARE THE RISKS OF VITRECTOMY?

Some of the risks of vitrectomy include:

- Infection of the eye;
- Bleeding of the eye;
- Retinal detachment;
- High pressure in the eye;
- Poor vision;
- Accelerated cataract formation.

It is important that you discuss the potential risks and benefits of this procedure with your ophthalmologist before making a decision regarding treatment.

COMPLIMENTS OF YOUR OPHTHALMOLOGIST:

San Antonio Eye Center, P.A.
(210) 226-6169
www.saeye.com

Academy reviewed 03/11

© 2011 American Academy of Ophthalmology. The American Academy of Ophthalmology, The Eye M.D. Association and the Academy logo are registered trademarks of the American Academy of Ophthalmology.